

magbo®



MBS

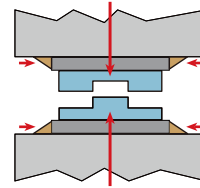
**ELECTRO-PERMANENT MAGNETIC
QUICK DIE CLAMPING SYSTEM
FOR STAMPING PRESSES**

- ✓ FAST
- ✓ EASY TO USE
- ✓ SAFE
- ✓ FLEXIBLE

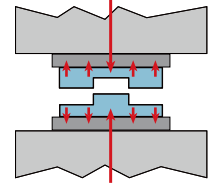


Uniform Clamping with Up to 12T/SQ Ft of Force ▼

The MBS technology is not affected by electrical breakdowns; the die will stay in position even without power supply with the same strength indefinitely. This uniform clamping force allows repeatability and constant quality of the stamping process by eliminating any flexing of die shoe.

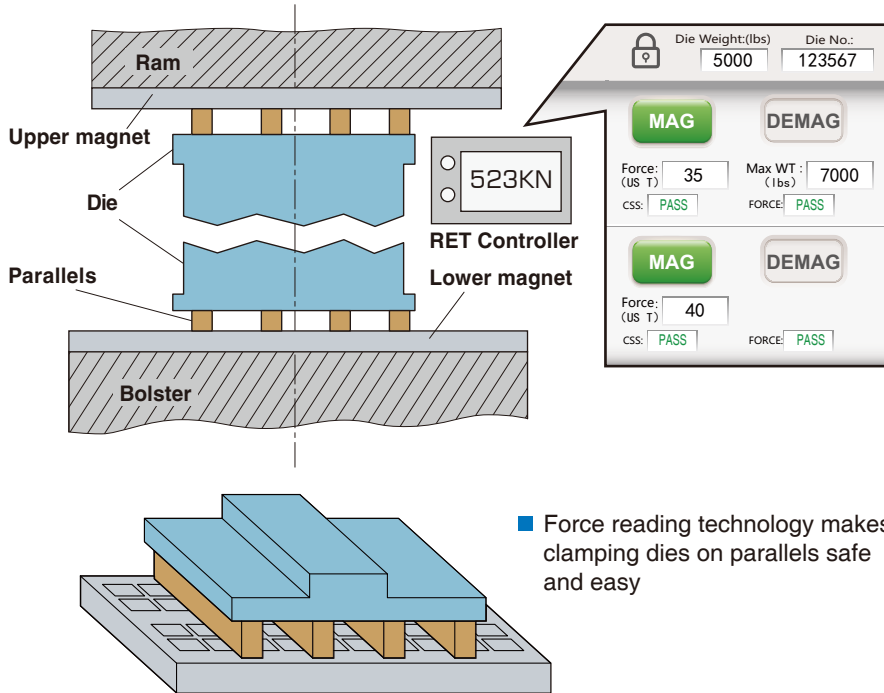


Traditional clamping



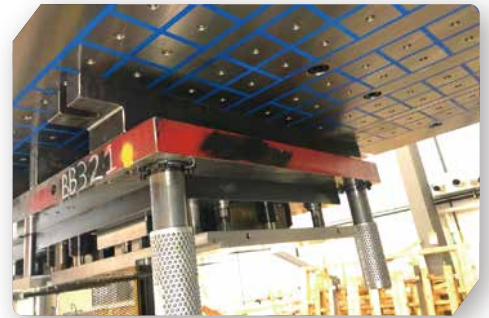
Clamping with MBS

Parallel Clamping **TOO!** ▼



■ Force reading technology makes clamping dies on parallels safe and easy

MBS does not magnetize the entire die; the magnetic flux penetrates the die only 20mm deep. The die face and part cannot become magnetized, allowing for scrap removal and proper die operation without interference. In a few seconds with the simple press of a button, it is possible to clamp or unclamp the die in complete safety. Even during a power failure, the system remains operative with constant clamping force.



No Die Modifications ▼

MBS is suitable for die plates, die shoes, QDC plates, or parallels of any size with no modifications. Die standardization is not required resulting in savings in engineering time and overall cost.

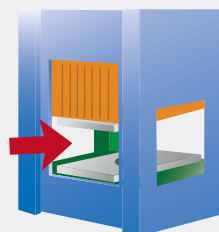
Flexible ▼

Locating devices are easy to add, scrap holes can be used, and bolster extensions can be added. Dies on parallels can be held with the special parallel pole design. T-slots in the lower can be added to enable a wide variety of die lifter configurations, and entire bolsters can be replaced.



User Friendly ▼

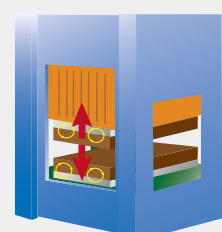
One operator with no tools can safely clamp a die with an exact known force in seconds, time and time again.



Easy to install



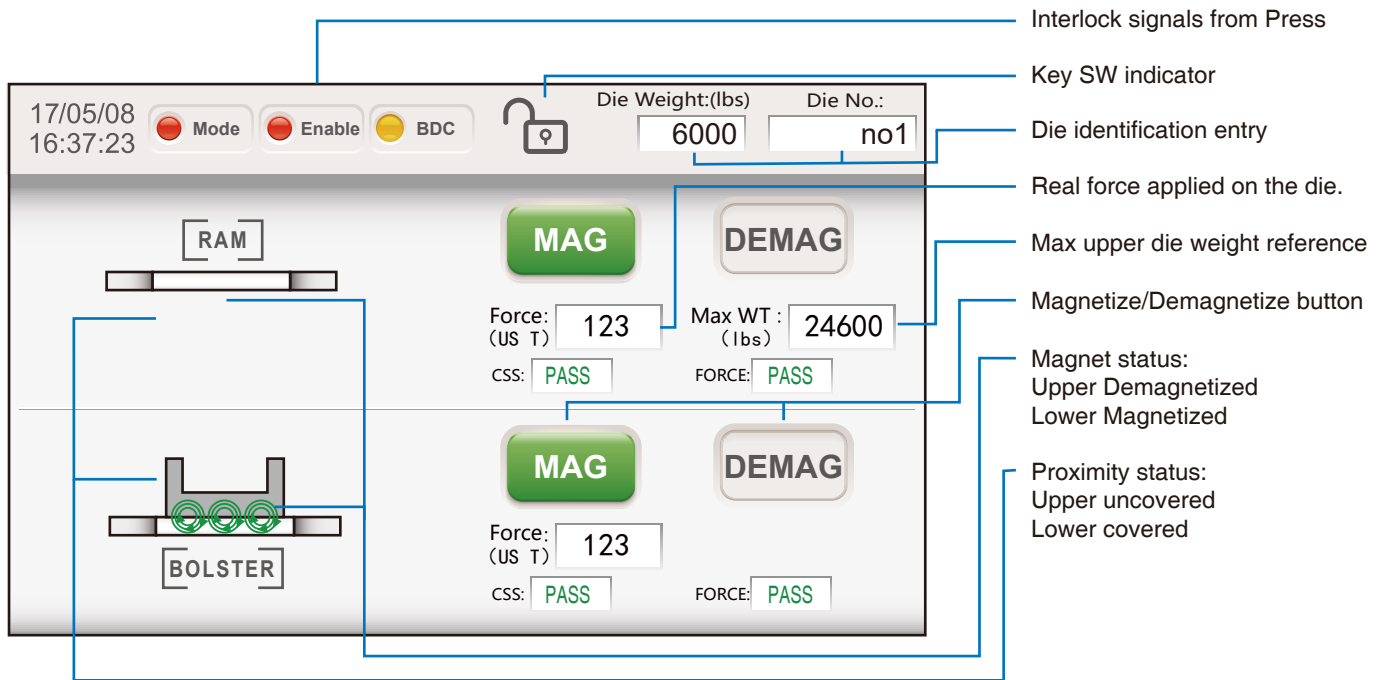
Fast and Easy



Safe and Uniform

NEW! Force Reading Controller ▼

Force reading system measures the real force accurately and allows die identification for up to 10,000 separate dies.



magbo® The **BEST SOLUTION** for Quick Die Change



Completely Customizable ▼

- Reference pins with hardened bushings can be added to speed up die locating
- Lower magnet can be equipped with scrap hole
- Entire bolster can be replaced to save shut height on smaller presses
- T-slots can be added to facilitate die lifter installation
- Magnet thickness standard 47mm with special thickness range of 35-228mm upon special request

Control Unit ▼

CUZ Controller



Size	L	H	P
Optional remote control			
mm	140	140	80
in	5.51	5.51	3.15

Size	mm (in)	L	H	P
Electrical cabinet				
Machine tonnage				
up to 700 t	700(27.56)	500(19.69)	250(9.84)	
700 to 3200 t	1000(39.37)	800(31.49)	300(11.81)	
over	1200(47.24)	800(31.49)	300(11.81)	



Touch screen pendant RET (Standard)



- **Clamping force reading option**
Small touchscreen panel can be mounted anywhere on the press or press control cabinet



“Safety First” System ▼

- Electro-permanent system does not lose holding force if a loss of power occurs.
- Prox Switch interlock
- BDC interlock
- Die set mode interlock
- Press enable interlock
- CSS ground fault circuit test protocol,
- Force reading interlock all work together to insure safe operation.



magbo®

© 1998 - 2021, SOPH GmbH, Hamburg, Germany

Copyright

All text, drawings, photos and product illustrations are subject to copyright and are the property of SOPH GmbH

Technical Changes

The data and illustrations in this catalogue are not binding and only provide an approximate description. We reserve the right to make changes to the product delivered compared with the data and illustrations in this catalogue, e.g. in respect of technical data, design, fittings, material and external appearance.

SOPH GmbH

Hermann-Buck-Weg 8, 22309 Hamburg

Tel: +49-40-609463670 Fax: +49-40-609463679 info@soph-gmbh.com

SOPH Inc

195 South Alloy Dr. Fenton MI 48430

Tel: +1-810-750-1120 Fax: +1-810-750-1141 info@soph-inc.com

SOPH Ltd

Building 3, No.6 Xin Zhong Rd, Haining 314400

Tel: 86-0573-89262865 Fax: 86-0573-89262865 info@soph-ltd.com

www.soph-magnet.com